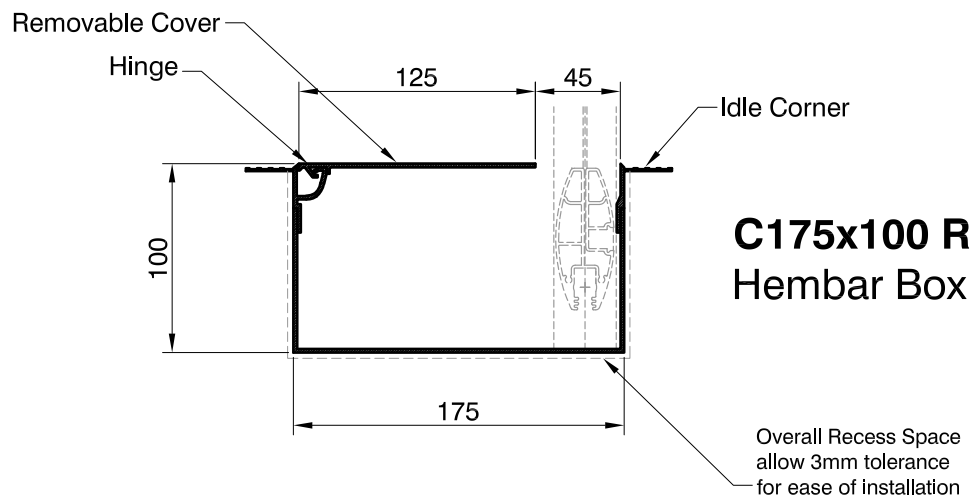
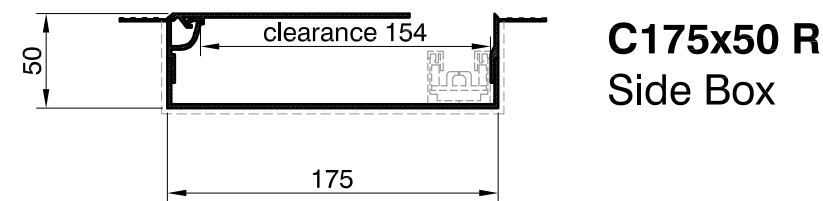
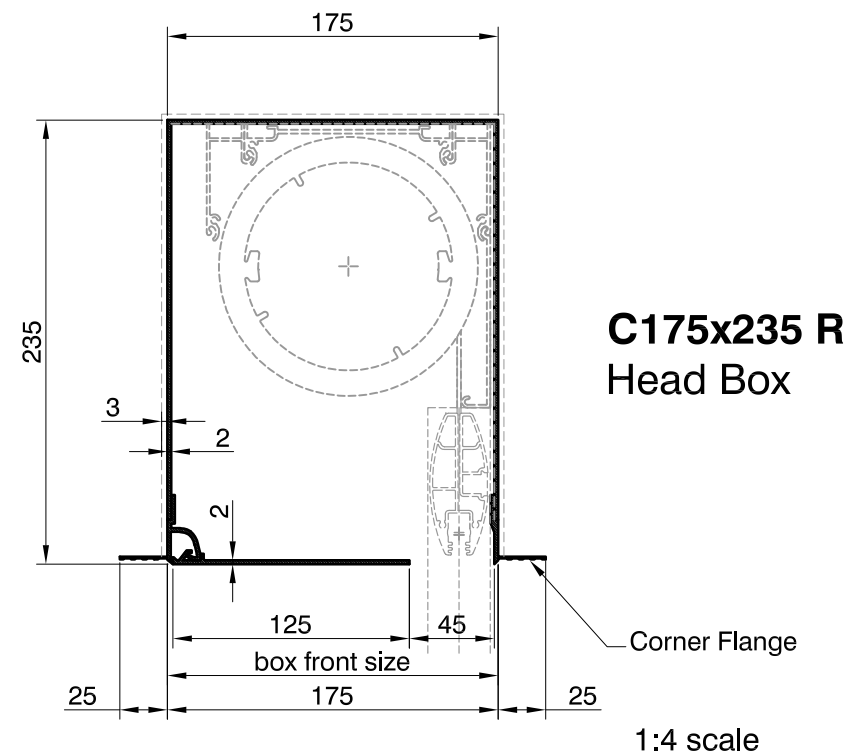
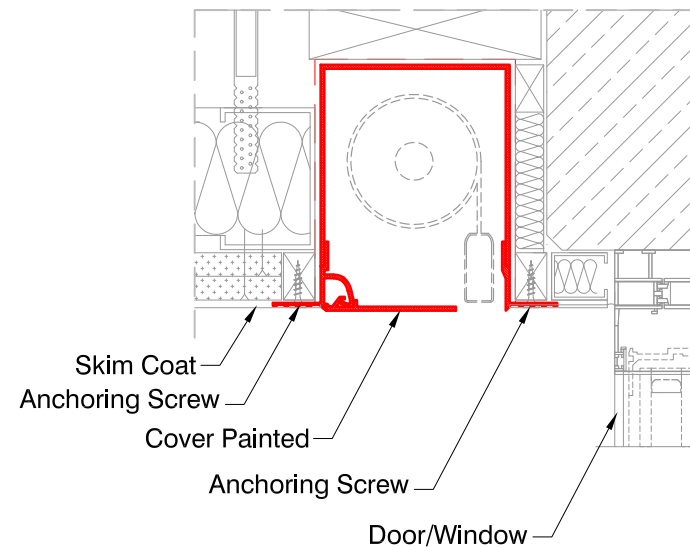


Blindspace® C175x235 & C175x100 & C175x50
for SHY 150/110 ZIP 240v

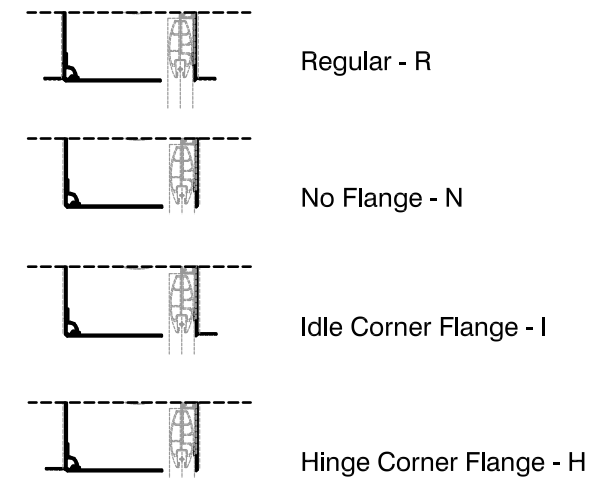


SAMPLE INSTALLATION DETAIL

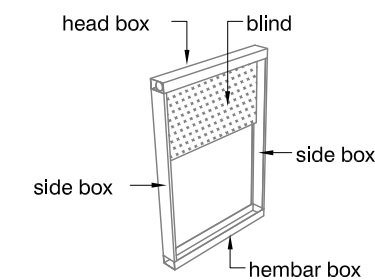
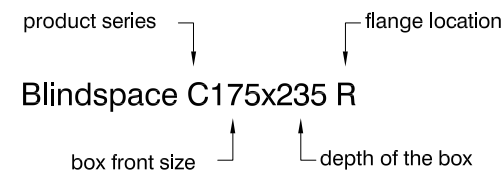
INSTALLATION NOTE:
Make sure there is space for window/door handles.
Boxes and blinds can also be mirrored in vertical plane
for opening towards the room.



SKIM COAT FLANGES
LOCATION OPTIONS

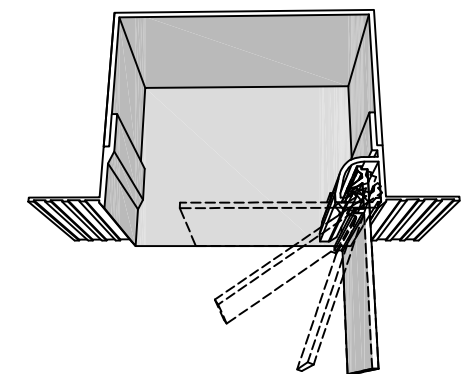
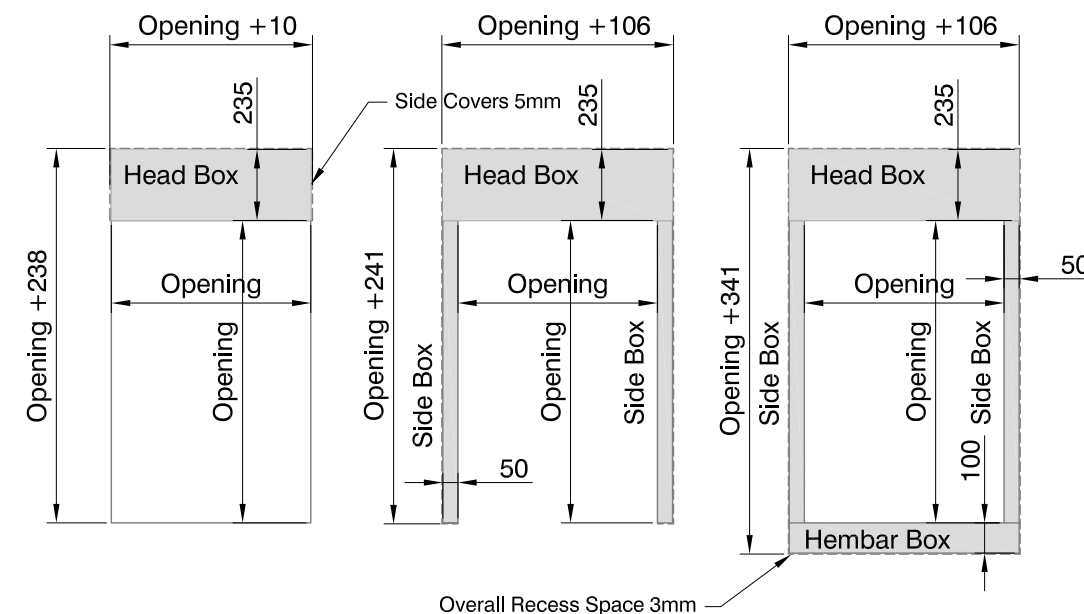


PRODUCT REFERENCE



Top down configuration of blinds is shown.
Bottom up configuration is also possible.
For bottom up configuration the frame layout
should be mirrored in horizontal plane.

FRAME LAYOUT OPTIONS



Print date	2018-9-27
Print file	blindspace windows c175x235 for windows with shy 150-110 zip 240v 75 hem v05.dwg
Page size	ISO A3 420x297
Remarks	ZWE